



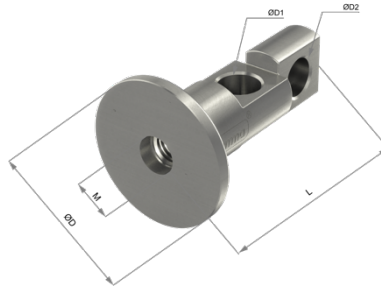
Performance by Design

# Product Data Sheet



## hamma® Standoffs Assemblies

**Code: HM-ARC20-2FB**  
2-HOLE FLAT WITH BASE



Product Code	Ø D1 (MM)	Ø D2 (MM)	M	Ø D (MM)	L (MM)
HM-ARC20-2FB	14.0	14.0	M12	50.0	80.0

### Technical Data

Electro Polish Finished

- Long lasting in the built environment
- Highly resistant

Timber, Masonry Fixing

- M12 chemical set or combo lag thread fixings

Design Layout Flexibility

- Vertical
- Horizontal
- Combinations of above
- Diamond

Commercial and Domestic Application

### NOTE:

All measurements in mm unless otherwise stated.

Contact us on 1800 272 879 or email [sales@arcuswire.com](mailto:sales@arcuswire.com)

[www.arcuswire.com](http://www.arcuswire.com)

hamma® is exclusively owned by Arcus Wire Group

