



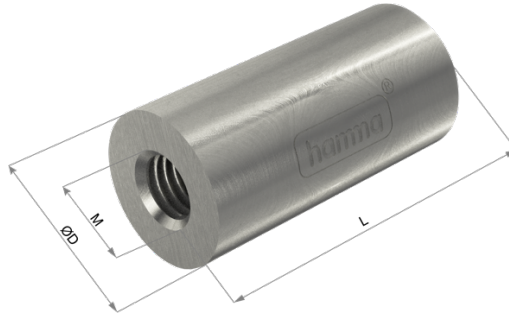
Performance by Design

# Product Data Sheet



## hamma® Standoffs Components

Code: **HM-ARC20-BAR-A**  
EXTENSION



Product Code	M	L (MM)	Ø D
<b>HM-ARC20-BAR-A</b>	M12	50.0	25.4

### Technical Data

Electro Polish Finished

- Long lasting in the built environment
- Highly resistant

Timber, Masonry Fixing

- M12 chemical set or combo lag thread fixings

Design Layout Flexibility

- Vertical
- Horizontal
- Combinations of above
- Diamond

Commercial and Domestic Application

#### NOTE:

All measurements in mm unless otherwise stated.

Contact us on 1800 272 879 or email [sales@arcuswire.com](mailto:sales@arcuswire.com)  
[www.arcuswire.com](http://www.arcuswire.com)

hamma® is exclusively owned by Arcus Wire Group

